



Easy To Assemble Horizontal Planter Box | DIY Woodworking Plans

Included here are the plans I developed and followed to make the Woodshop Junkies *Easy To Assemble Horizontal Planter Box*. The Planter box was designed to be a DIY, easy to build project that requires very basic wood working tools to assemble.

My Easy To Assemble Horizontal Planter Box works great for me but I cannot guarantee your satisfaction.

It is recommended that the *Easy To Assemble Horizontal Planter Box* be lined with plastic to retain the soil. Holes should also be made into the plastic to allow for water drainage.

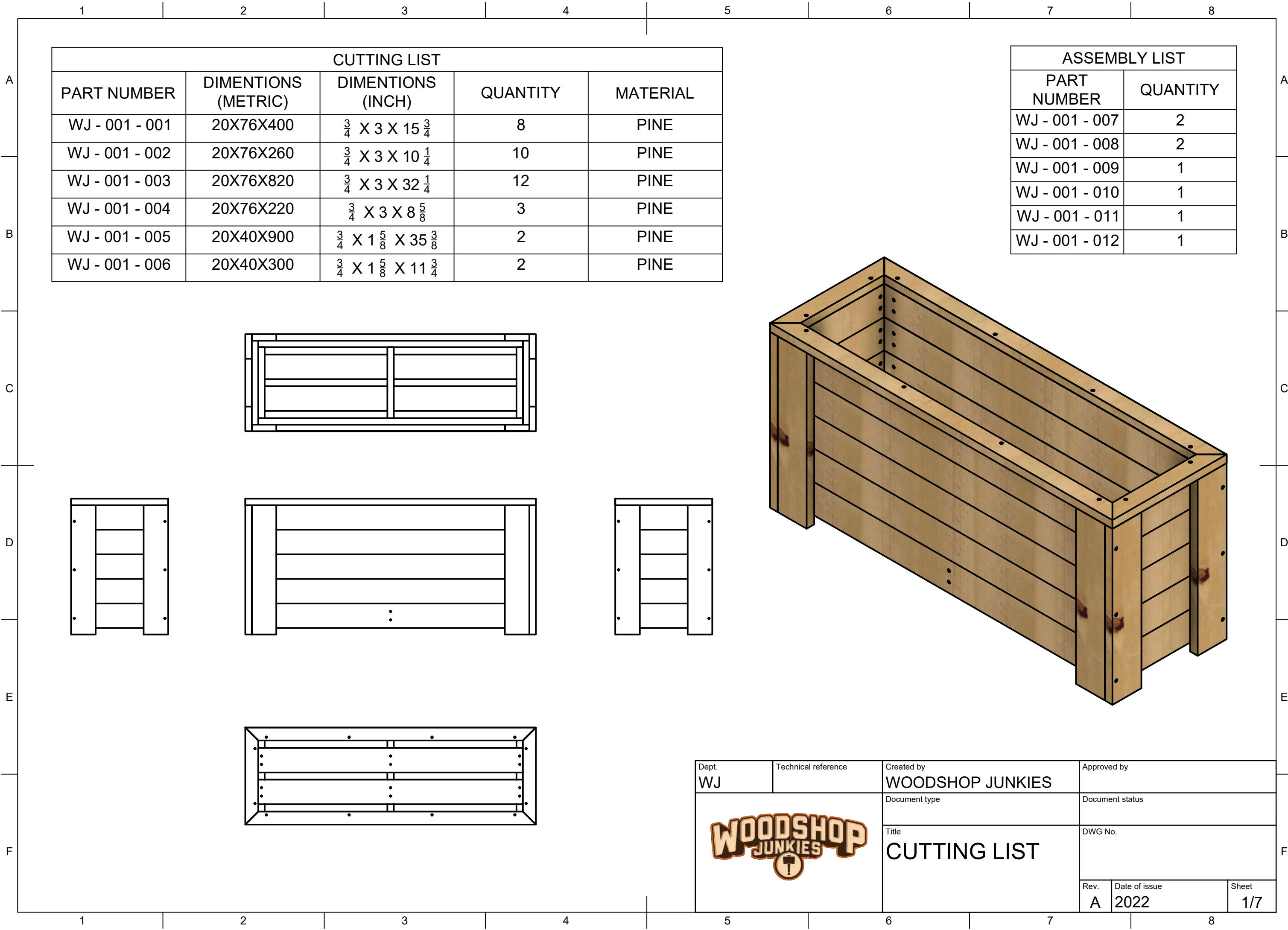
A coat of varnish is also recommended to help extend the life of the *Easy To Assemble Horizontal Planter Box*.

DISCLAIMER:

I am NOT a professional woodworker or qualified engineer and these plans do not constitute professional advice of any kind. They are made available purely for entertainment and information purposes.


The use of these plans is done entirely at the user's own risk. Woodshop Junkies will not accept any responsibility or liability for any damage or injury incurred due to any form of use of these plans.

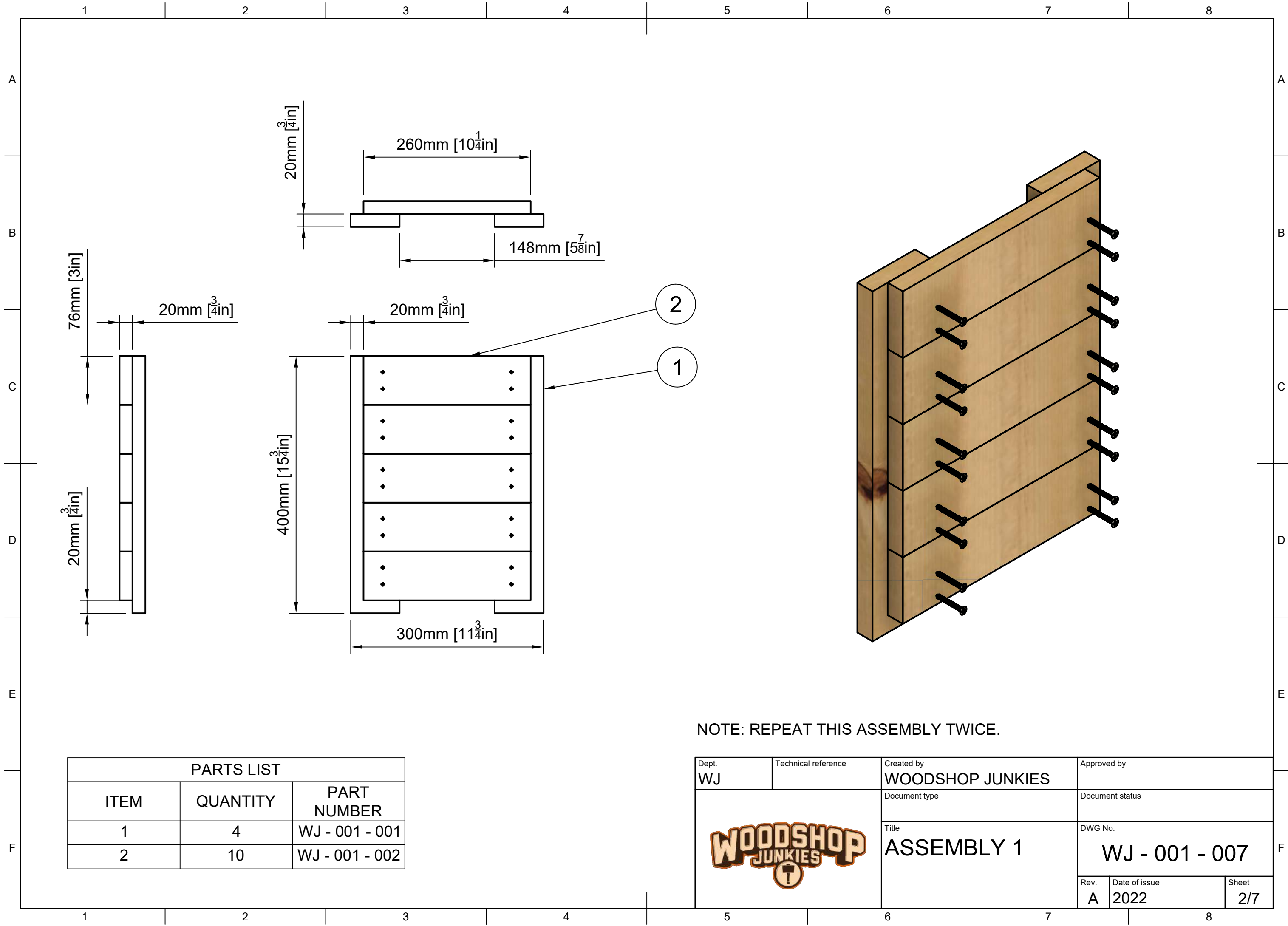
ALWAYS WORK SAFE AND FOLLOW THE SAFETY INSTRUCTIONS AS SET OUT IN THE USER MANUALS OF YOUR EQUIPMENT.

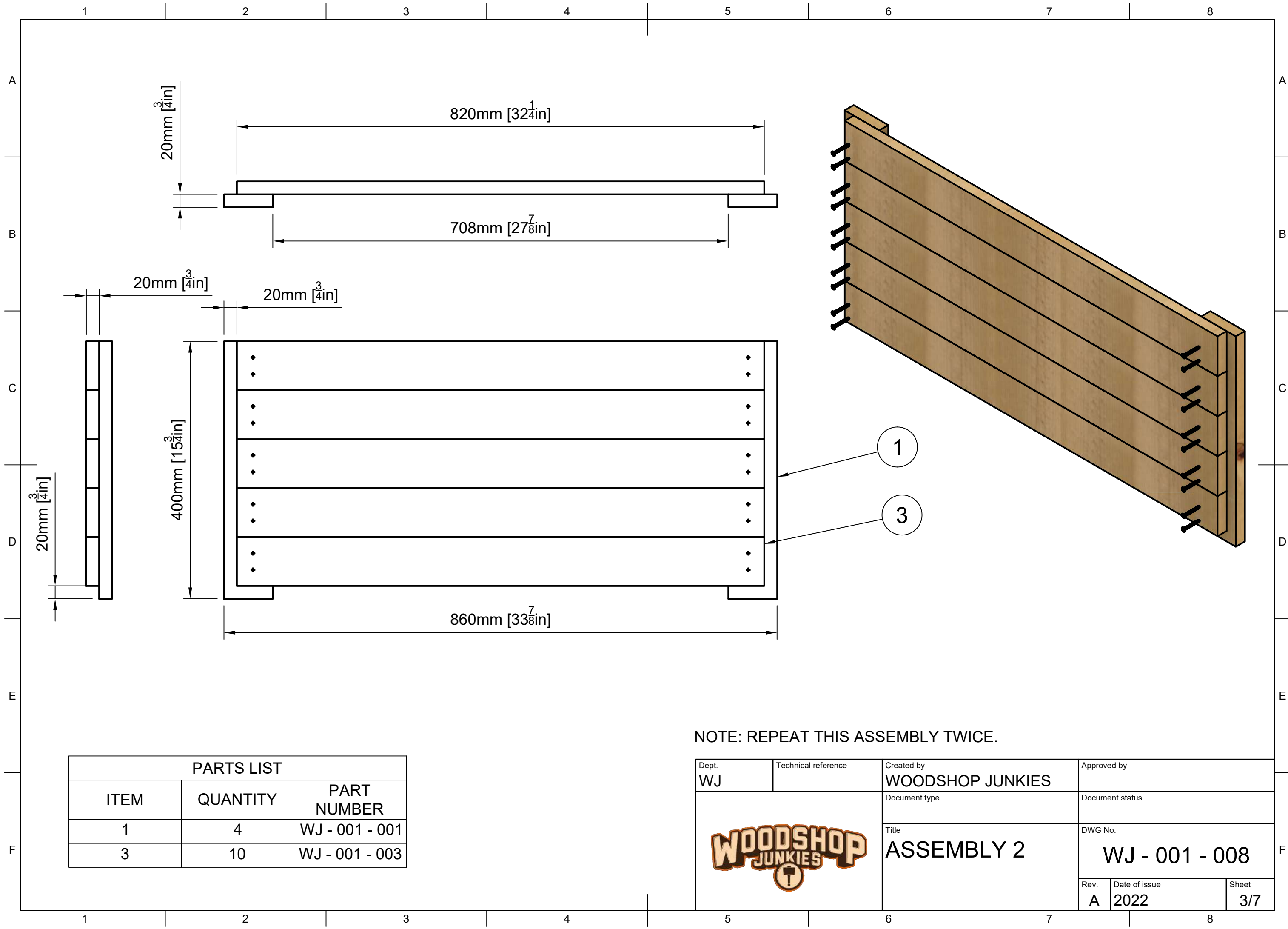


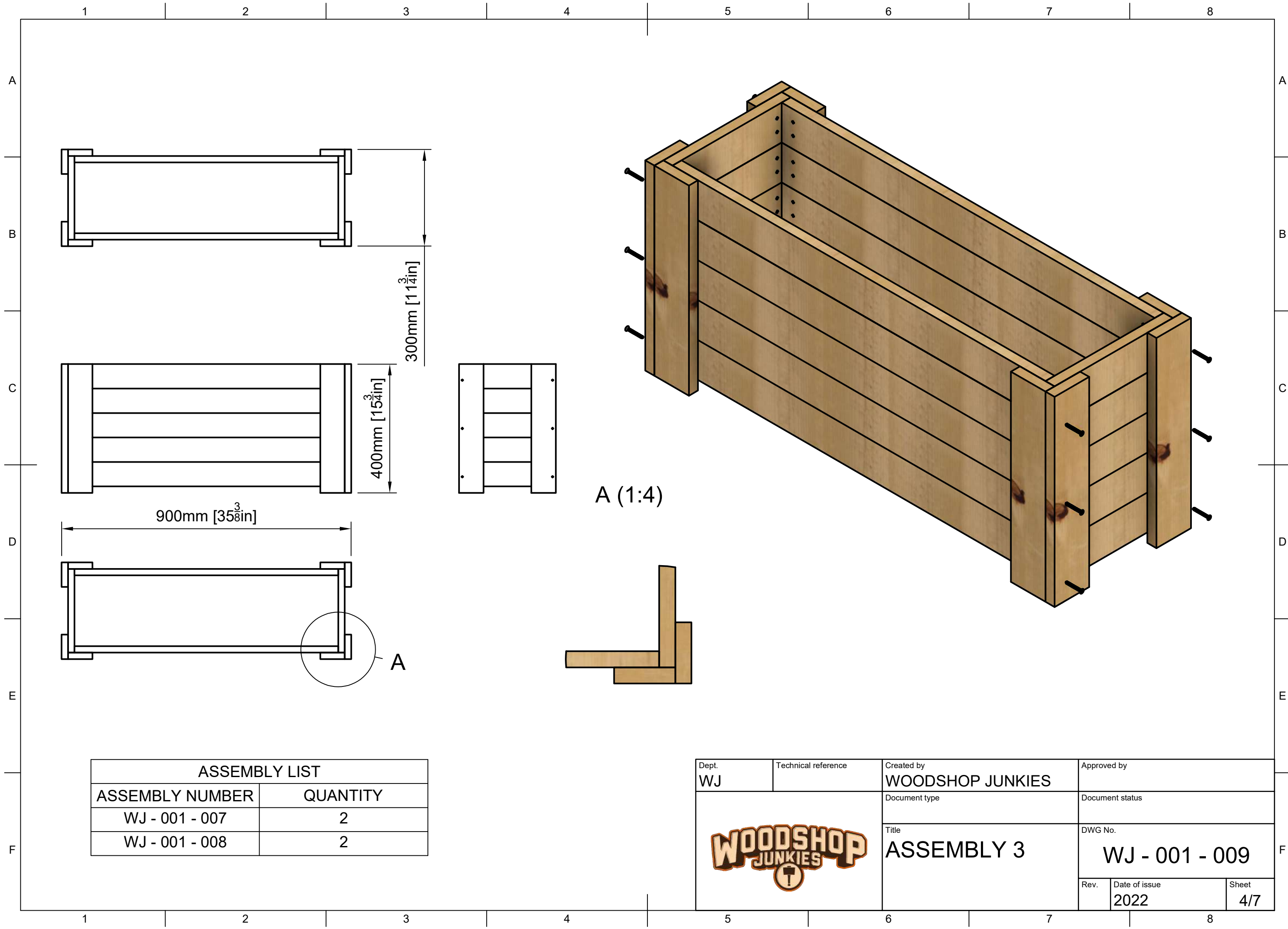
CUTTING LIST				
PART NUMBER	DIMENTIONS (METRIC)	DIMENTIONS (INCH)	QUANTITY	MATERIAL
WJ - 001 - 001	20X76X400	$\frac{3}{4}$ X 3 X 15 $\frac{3}{4}$	8	PINE
WJ - 001 - 002	20X76X260	$\frac{3}{4}$ X 3 X 10 $\frac{1}{4}$	10	PINE
WJ - 001 - 003	20X76X820	$\frac{3}{4}$ X 3 X 32 $\frac{1}{4}$	12	PINE
WJ - 001 - 004	20X76X220	$\frac{3}{4}$ X 3 X 8 $\frac{5}{8}$	3	PINE
WJ - 001 - 005	20X40X900	$\frac{3}{4}$ X 1 $\frac{5}{8}$ X 35 $\frac{3}{8}$	2	PINE
WJ - 001 - 006	20X40X300	$\frac{3}{4}$ X 1 $\frac{5}{8}$ X 11 $\frac{3}{4}$	2	PINE

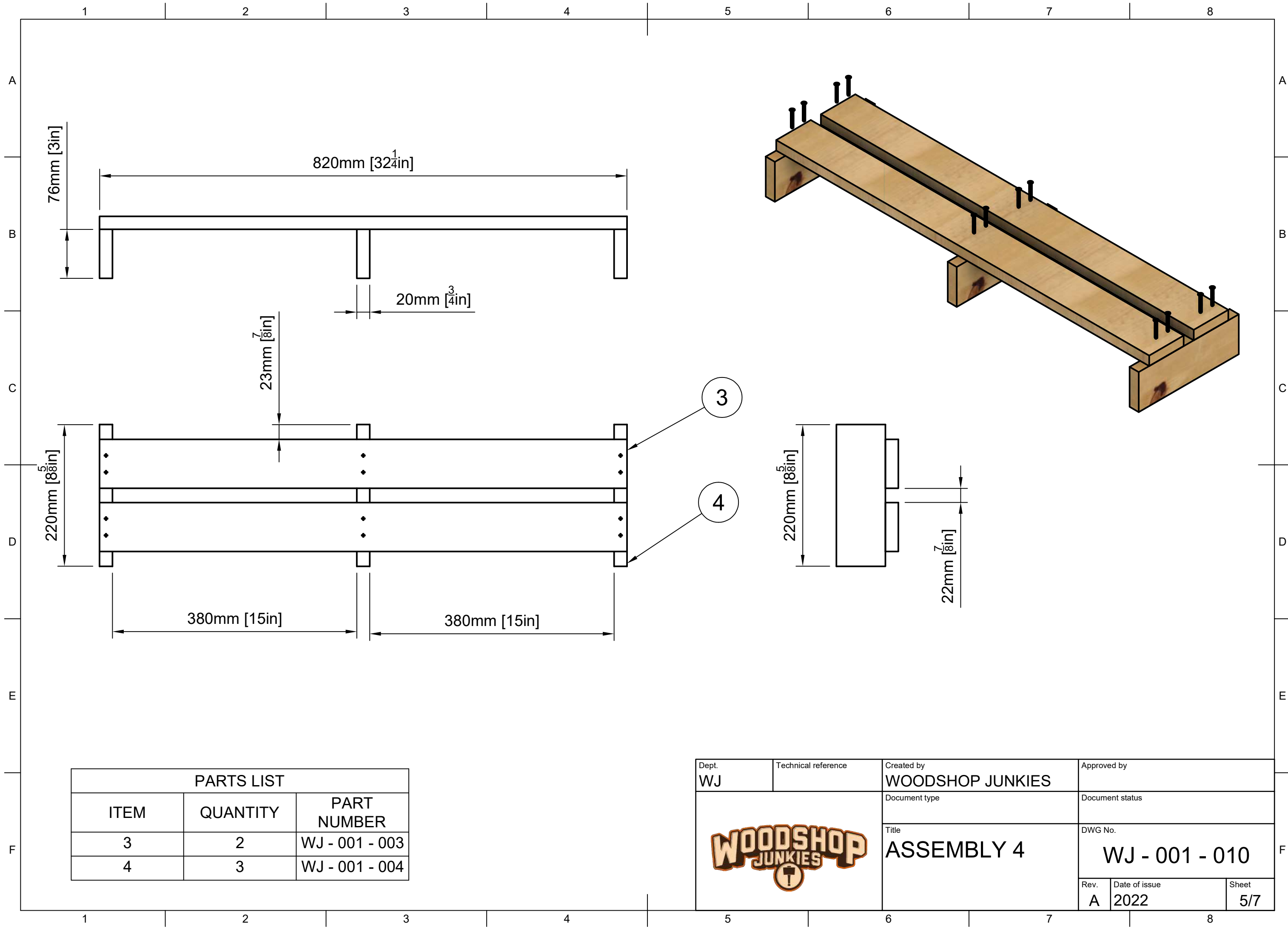
ASSEMBLY LIST	
PART NUMBER	QUANTITY
WJ - 001 - 007	2
WJ - 001 - 008	2
WJ - 001 - 009	1
WJ - 001 - 010	1
WJ - 001 - 011	1
WJ - 001 - 012	1

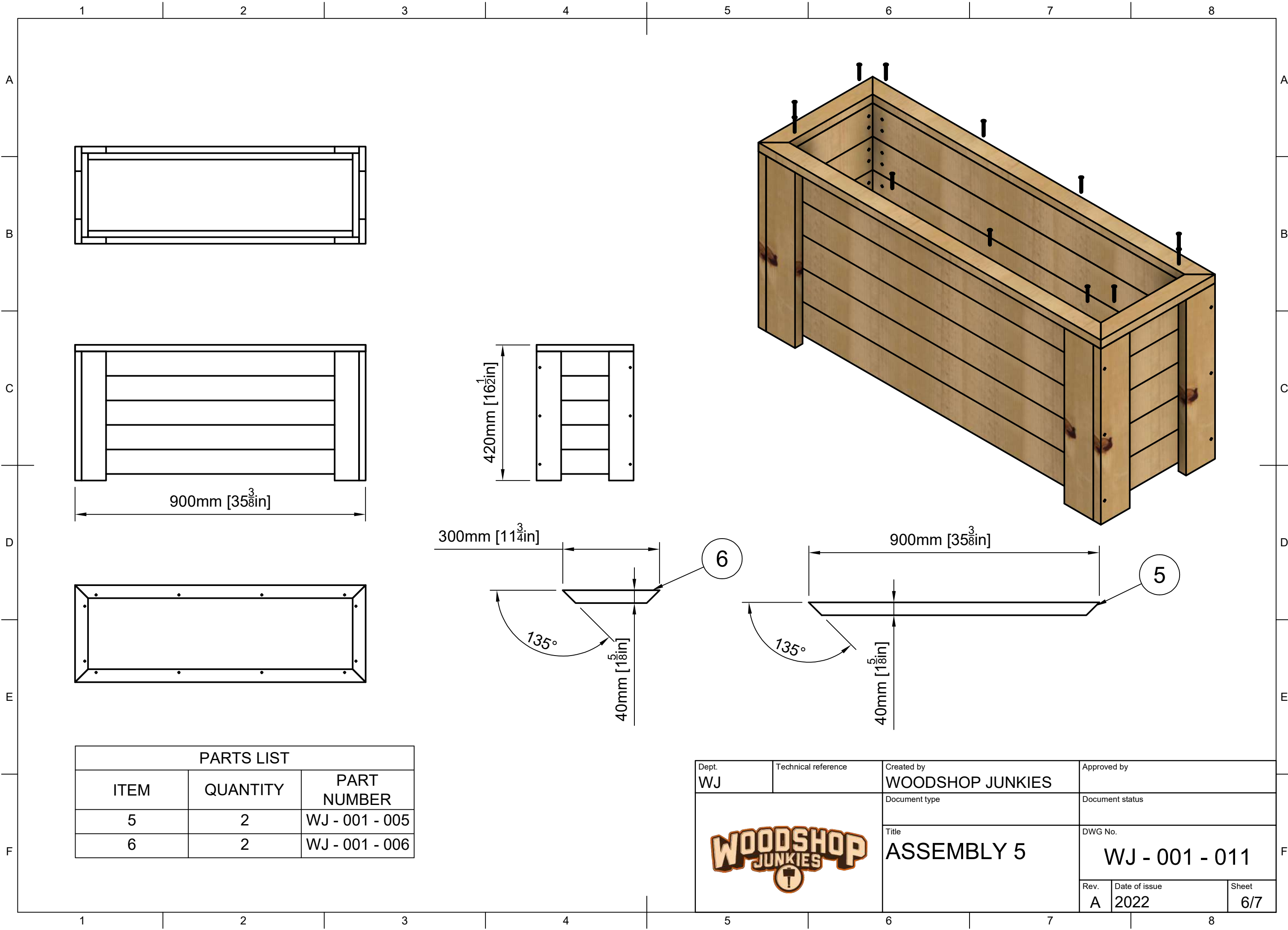
Dept. WJ	Technical reference	Created by WOODSHOP JUNKIES	Approved by	
		Document type	Document status	
		Title CUTTING LIST	DWG No.	
		Rev. A	Date of issue 2022	Sheet 1/7




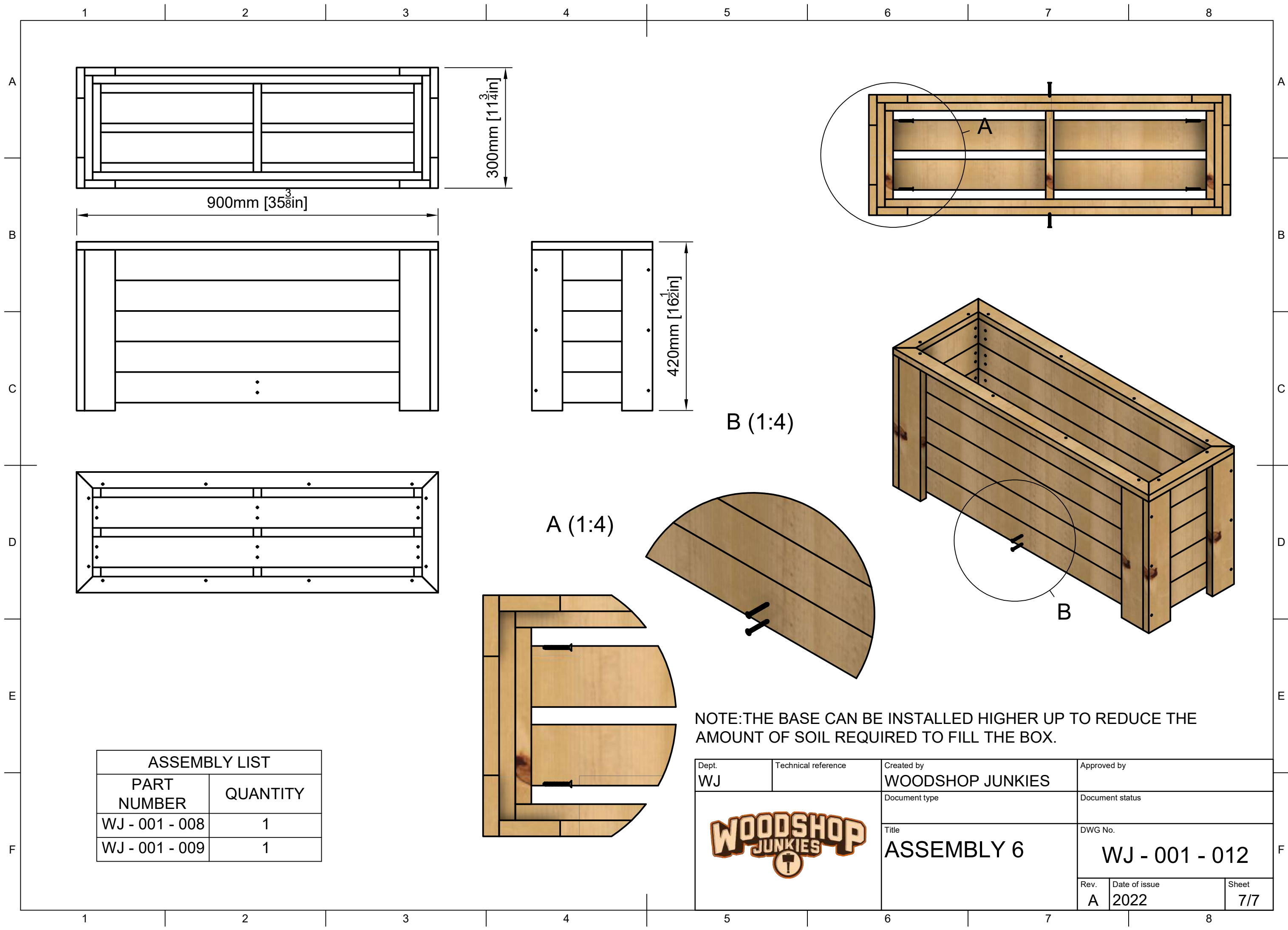









Dept. WJ	Technical reference	Created by WOODSHOP JUNKIES	Approved by
		Document type	Document status
		Title ASSEMBLY 5	DWG No. WJ - 001 - 011
		Rev. A	Date of issue 2022
		Sheet 6/7	



Dept. WJ	Technical reference	Created by WOODSHOP JUNKIES	Approved by
		Document type	Document status
		Title ASSEMBLY 6	DWG No. WJ - 001 - 012
		Rev. A	Date of issue 2022
		Sheet 7/7	